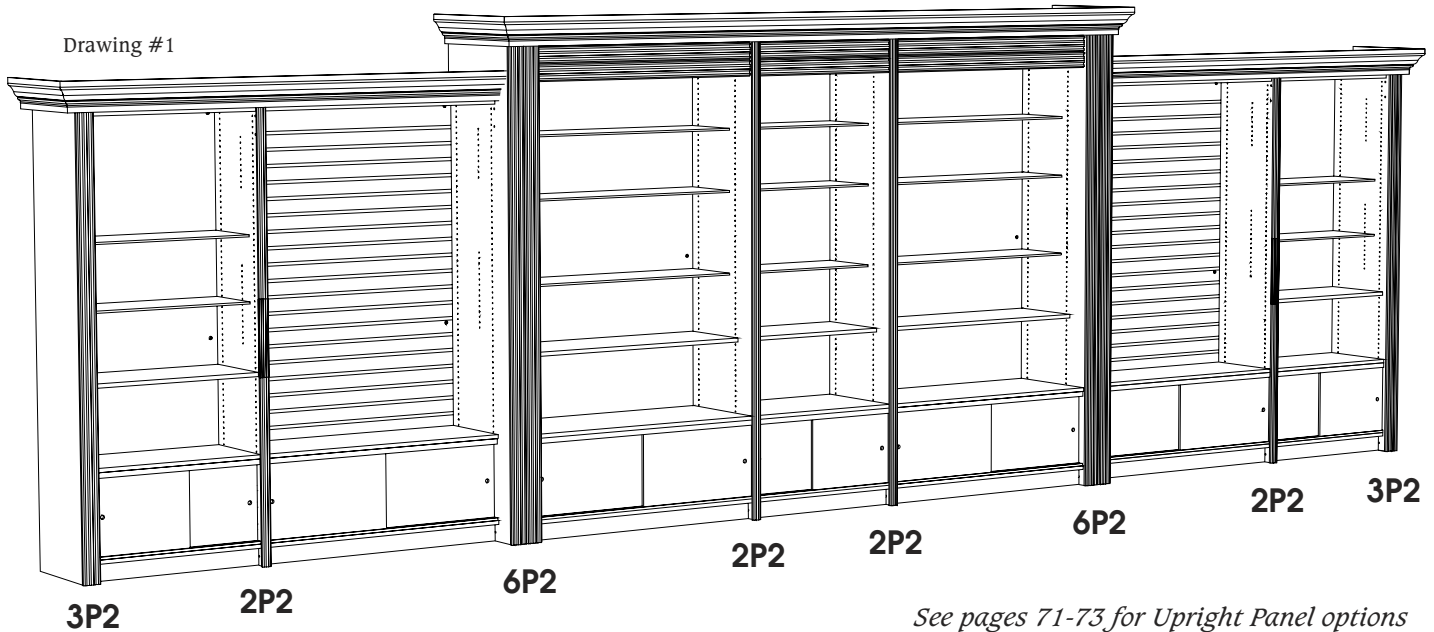


Designer's Choice Perimeter System

Designer's Choice is a proven system that provides maximum design, finish and display options to meet ever changing retailing needs. Achieve the right look and functionality by selecting from the variety of standard components. Then dress up your store by adding moulding, special features, finishes and accents that match or complement your store interior. We encourage you to contact our experienced staff early in the design process.



Step-by-Step guide for designing perimeters with Designer's Choice Perimeter System:

1. Determine the best cabinet depth for each space.
Depths offset in 4" increments. (10" - 14" - 18" - 22" - 26")
2. Determine the best cabinet height for each space.
Heights offset in 10" increments. (82" - 92" - 102")
3. Choose upright thickness or combinations of thicknesses. ($\frac{3}{4}$ " - 6" within same run)
See pages 71-72
4. Choose design detail for upright front edges. ($\frac{3}{4}$ " taped edge - 6- $\frac{1}{2}$ " moulding)
See page 73
5. Choose header height and detailing. Headers are not required when top caps are used.
Header heights are 3- $\frac{1}{4}$ " or 6- $\frac{1}{2}$ ". *See page 77*
6. Determine best cabinet width and height which determines the length of kickboards and headers and the size of backs. Backs can be plain or slatwall.
7. Choose top cap detail, if included in the design. If headers are not used, top caps are required. *See pages 76, 79-82*
8. Choose Oak or Maple with clear lacquer or stained finish. Some designs are also available in wood-grained Oak or Maple Melamine.
9. Choose optional laminate (+) or color stripe (=). *See page 6*
10. Choose accessories. *See pages 87-88*