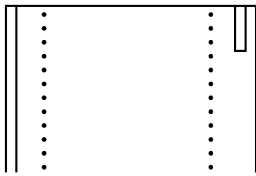
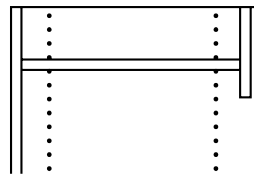


Below are several illustrations of Header and Top Cap possibilities for the Designer's Choice Perimeter System. There are few limitations, so choose combinations of components to fit your specific needs and preferences. See pages 81-82 for more examples.

Minimum requirements: Upright panels, Back Panel, Header *and/or* Top Cap, Kickboard and Base Shelf.

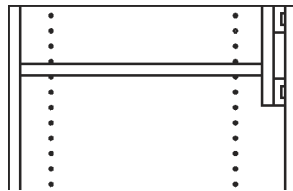


A. Header height options are 3-1/4" and 6-1/2". Shown is 3-1/2" H Header

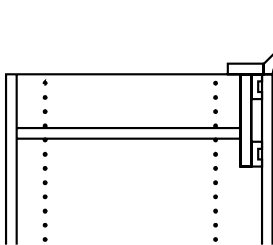
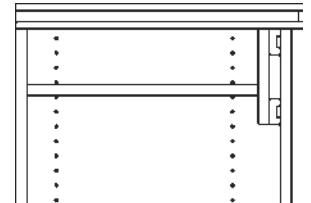


B. Upright Panel with 6-1/2" H Header and adjustable shelf used as a recessed top.

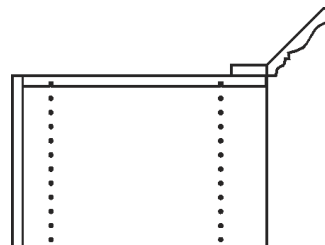
C. Moulding added to Upright Panel. Shown with Header with double-pattern moulding and adjustable shelf used as recessed top.



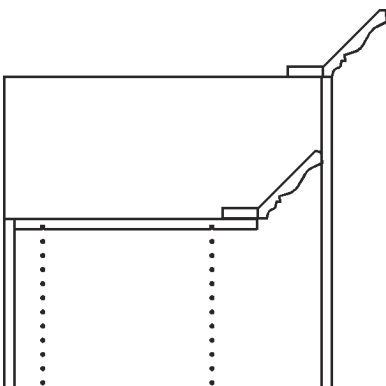
C1. Same as C with a Panel Cap mounted on top of each upright (see page 82)



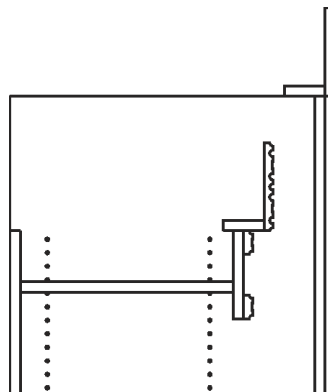
D. Same as C with a Crown Moulding Top Cap (see page 82)



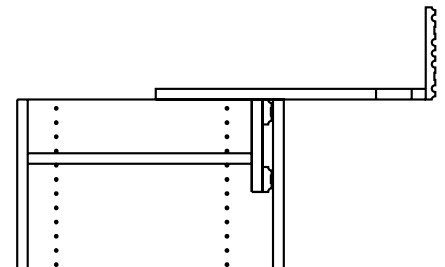
E. When using a Top Cap without a Header, a top shelf is recommended. Omitting the Header increases the vertical display space.



F. All Transition Uprights have a left side and a right side. Connector holes for Headers and Kickboards on the left match Uprights to the left of the Transition Upright. Holes on the right of the Transition Upright match Uprights to the right. Shown: Crown Moulding at two levels, 10" and recessed 4".

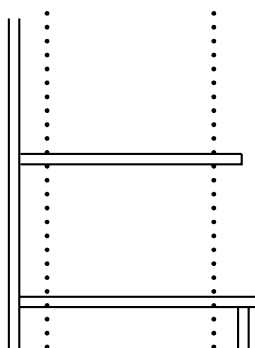


F1. A transition Upright with moulded Header and Top Cap.



F2. Top Cap can be extended to include lighting. (Inline run only, no stairstep.)

G. A Kickboard and Base Shelf are required for the bottom. Shown with a Base Shelf and one Adjustable Shelf. Full depth Base Shelf can also be used as an Adjustable Shelf.



H. Bottom enclosed using a sliding Door Kit. Requires a second Base Shelf to form the top of the storage cabinet.

