

# 100 Series

## Straight Half-vision Units

Add glass Straight Half-vision Units for product display. Includes one 12" deep adjustable glass shelf inside glass case and one adjustable wood shelf behind doors and in open storage.

Cabinets are 24" D x 42" H  
24", 36", 48", 60" W

**OPTIONS:**

- Halogen lighting
- Mirror on inside of doors
- Privacy Swing Gate
- Locking Doors & Drawers
- Decorative Applique Moulding on front and side
- Upholstered inserts for case

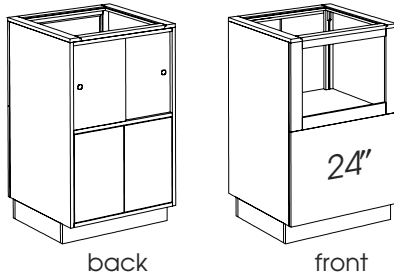
X\*S-0120 - 24" Straight Half-vision Unit  
24" D x 24" W x 42" H



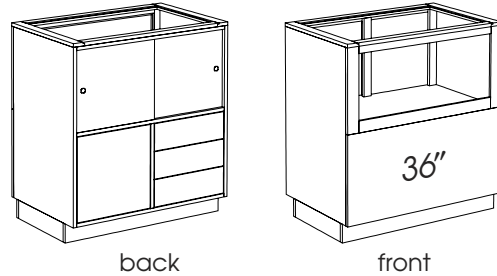
**Straight Half-vision Unit**

X*S-0120 - 24"	\$1,266.00 / \$1,583.00
X*S-0130 - 36"	\$1,674.00 / \$2,093.00
X*S-0140 - 48"	\$1,878.00 / \$2,347.00
X*S-0150 - 60"	\$2,011.00 / \$2,514.00

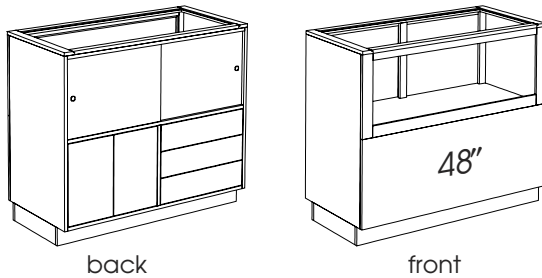
**X\*S-0120**



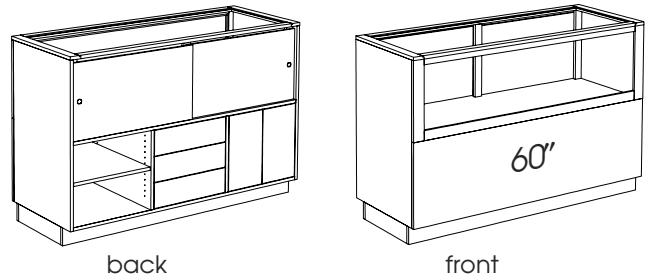
**X\*S-0130**



**X\*S-0140**



**X\*S-0150**



X\*S-0140 - 48" Straight Half-vision Unit  
24" D x 48" W x 42" H



X\*S-0150 - 60" Straight Half-vision Unit  
24" D x 60" W x 42" H