

100 Series

Straight Half-vision Corner Units

Popular glass Straight Half-vision Corner Units. Includes one 12" deep adjustable glass shelf for each section inside glass case and one adjustable wood shelf behind doors.

Cabinets are 24" D
overall #0101: 48" D x 48" W x 42" H
overall #0102: 48" D x 72" W x 42" H

OPTIONS:

- Halogen lighting
- Mirror on inside of doors
- Privacy Swing Gate
- Locking Doors and Drawers
- Decorative Applique Moulding on front and side
- Upholstered inserts for case



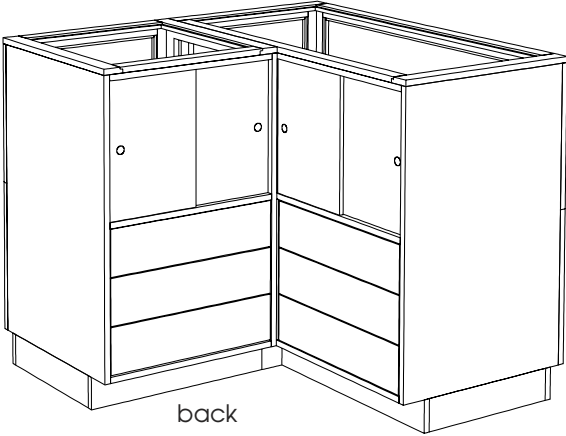
#X*S-0101 - 48" x 48" W Straight Half-vision Corner 24" D x 42" H

Straight Half-vision Corner Unit

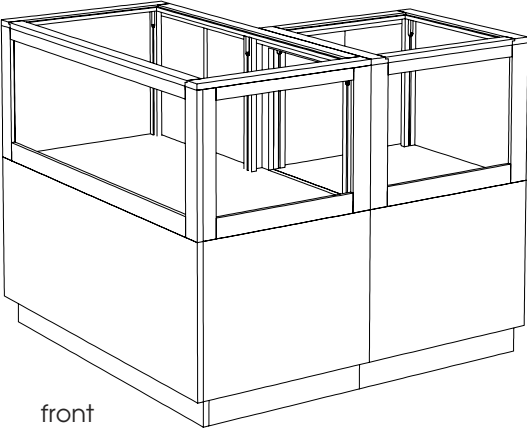
X*S-0101 - 48" \$2,578.00 / \$3,222.00

X*S-0102 - 72" \$3,058.00 / \$3,823.00

#X*S-0101

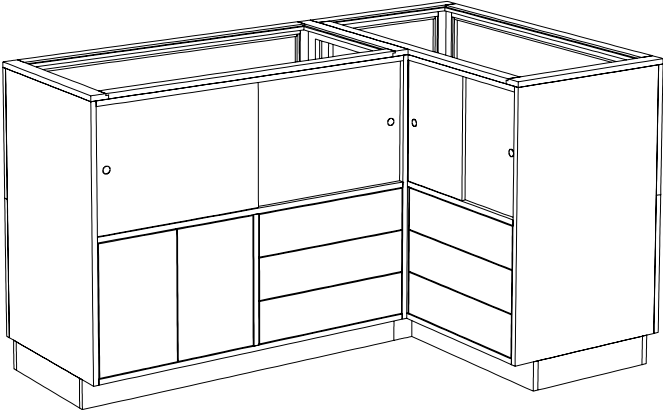


back

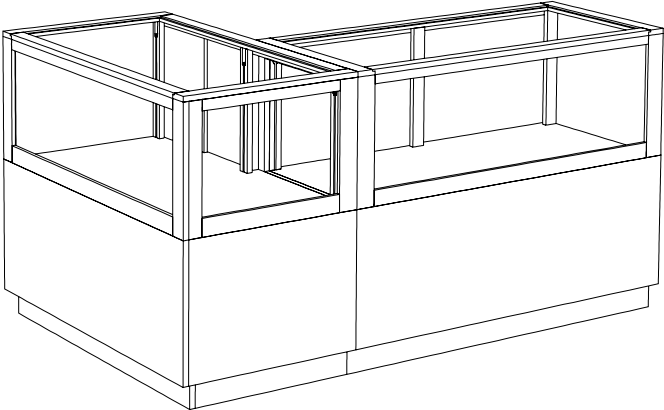


front

#X*S-0102



back



front