

500 Series

Straight/Curved Filler Units

Use with straight runs for various configurations. Finished all sides. Durable laminate countertop. Open units include two adjustable shelves. Custom angles available.

24" D x 42" H

OPTIONS:

- Premium countertop surface (Corian, Metal Laminate)
- Decorative Applique Moulding on front and sides

Straight/Curved Filler Unit

45° Segmented Front

#X*S-0511 open \$849.00 / \$1,061.00 / \$747.00

#X*S-0512 closed \$849.00 / \$1,061.00 / \$747.00

45° Curved Front

#X*S-0513 open \$1,065.00 / \$1,331.00 / \$937.00

#X*S-0514 closed \$1,065.00 / \$1,331.00

24" Square

#X*S-0521 open \$680.00 / \$850.00 / \$598.00

#X*S-0522 closed \$680.00 / \$850.00 / \$598.00

24" Curved

#X*S-0523 open \$1,059.00 / \$1,323.00 / \$934.00

#X*S-0524 closed \$1,059.00 / \$1,323.00

90° Wedge

#X*S-0525 open \$859.00 / \$1,073.00 / \$755.00

#X*S-0526 closed \$859.00 / \$1,073.00 / \$755.00

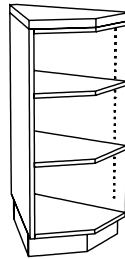
#X*S-0522 - 24" Square Filler
24" D x 24" W x 42" H



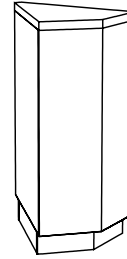
45° Segmented Front

#X*S-0511

#X*S-0512



open

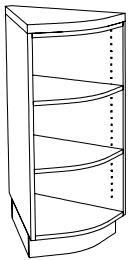


closed

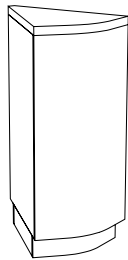
45° Curved Front

#X*S-0513

#X*S-0514



open

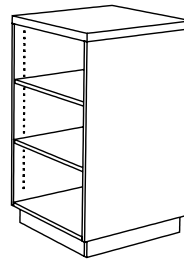


closed

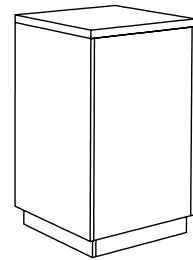
24" Square

#X*S-0521

#X*S-0522



open

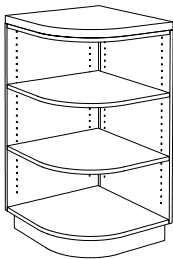


closed

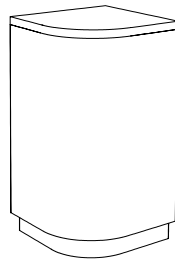
24" Curved

#X*S-0523

#X*S-0524



open

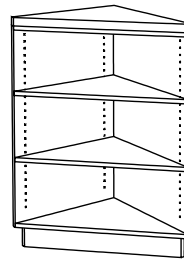


closed

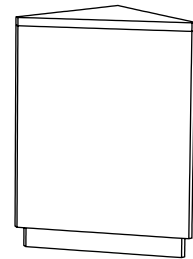
90° Wedge

#X*S-0525

#X*S-0526



open



closed